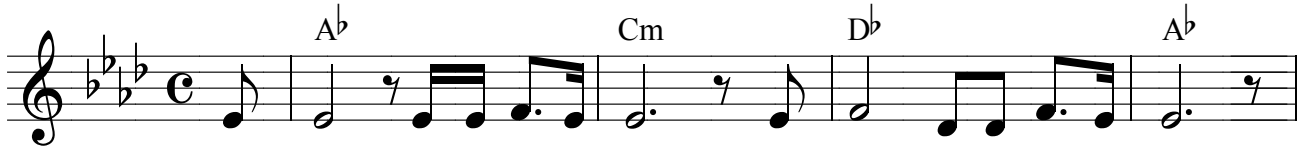
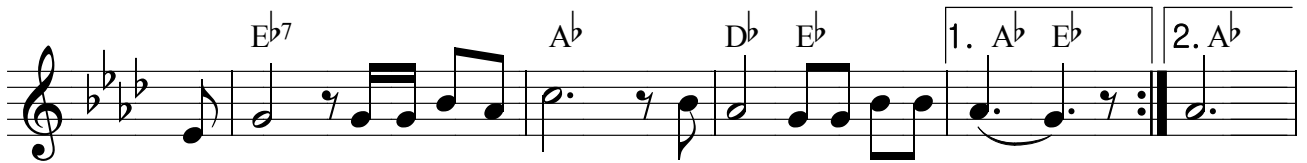


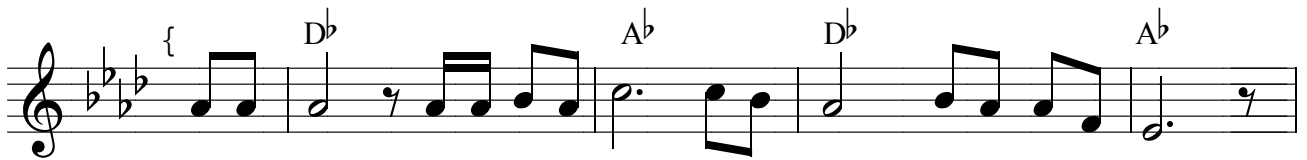
신현배



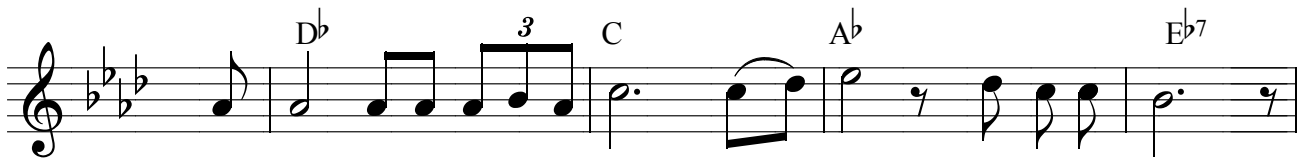
1. 험한 세상살면서 내게 시련이와도
2. 우는 사자와같이 저마귀 나를삼키려



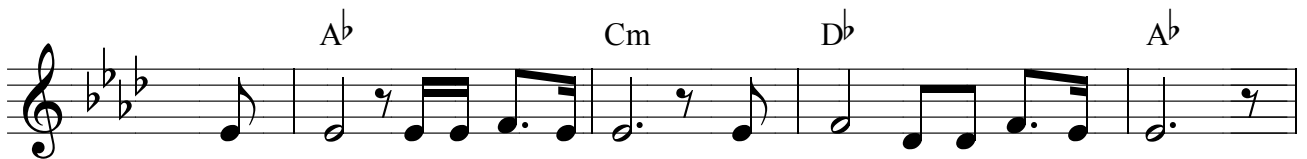
내게 슬픔이와도 나는 주만보리라 -
나를 유혹하지만 주가 나를지키리



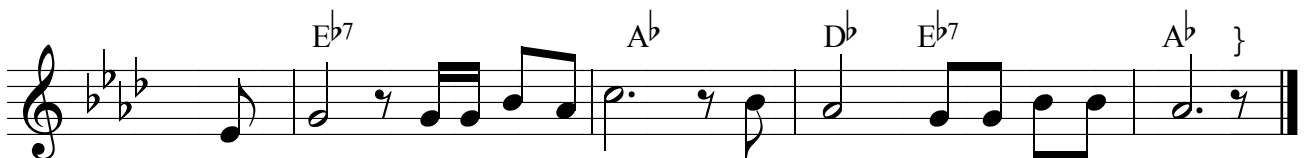
환란아 내게오너라 시련아 내게오너라



누가 주님 사랑에서 나 - 를 끊으리오



나는 괴롭없겠네 주가 나와 함께 해



나를 인도하시니 나는 주만따르리